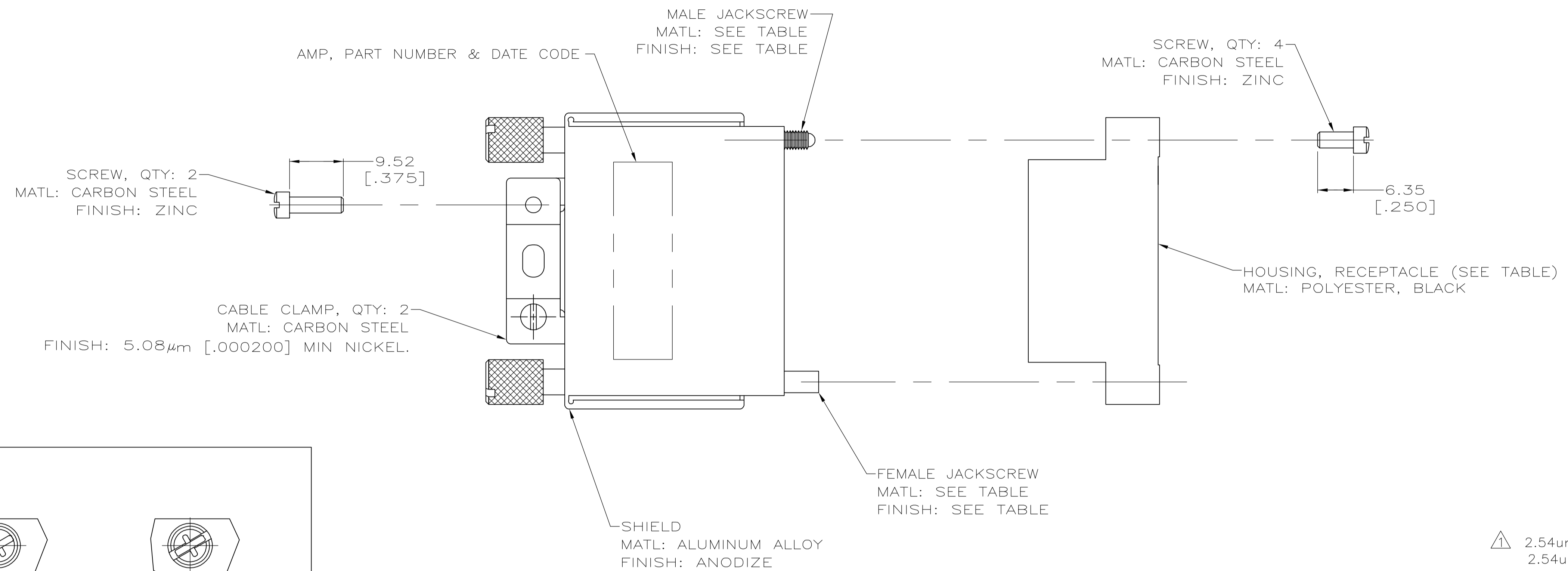
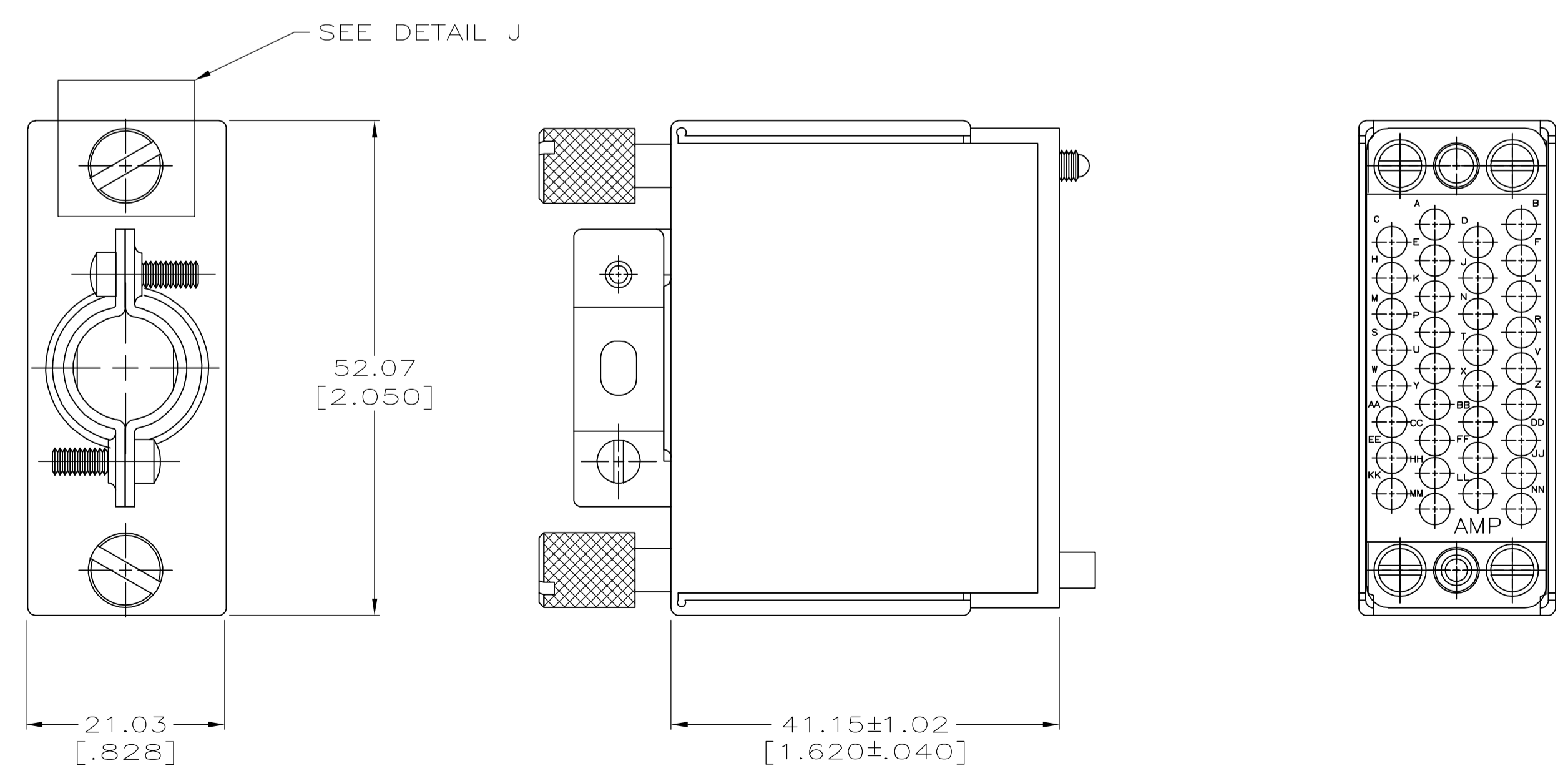
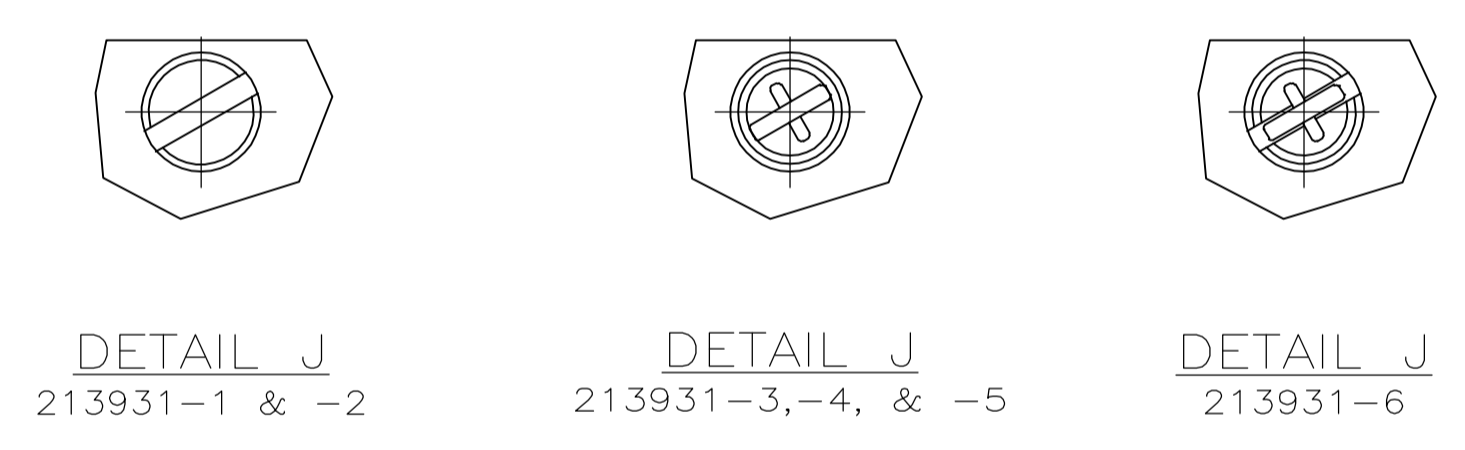


LOC		DIST		REVISIONS			
P	LTR	DESCRIPTION	DATE	DWN	APVD		
K1		REVISED PER ECO-06-13342	6/15/06	SS	GS		



△ 2.54µm [.000100] MIN NICKEL OVER
2.54µm [.000100] MIN COPPER.



ASSEMBLED VIEW

YES	7.62-11.43 [.300-.450]	BULK	-	STAINLESS STEEL	213931-9
YES	11.05-13.84 [.435-.545]	INDIVIDUAL	-	STAINLESS STEEL	213931-8
YES	11.05-13.84 [.435-.545]	BULK	△	ZINC	213931-7
OBSOLETE	11.05-13.84 [.435-.545]	INDIVIDUAL	△	ZINC	213931-6
YES	7.62-11.43 [.300-.450]	INDIVIDUAL	△	ZINC	213931-5
NO	11.05-13.84 [.435-.545]	INDIVIDUAL	△	ZINC	213931-4
YES	11.05-13.84 [.435-.545]	INDIVIDUAL	△	ZINC	213931-3
YES	7.62-11.43 [.300-.450]	INDIVIDUAL	-	STAINLESS STEEL	213931-2
YES	11.05-13.84 [.435-.545]	BULK	-	STAINLESS STEEL	213931-1
RECEPTACLE HOUSING	CABLE RANGE DIA	PACKAGING	FINISH	MATERIAL	PART NUMBER

THIS DRAWING IS A CONTROLLED DOCUMENT.

DIMENSIONS: mm [INCHES]

TOLERANCES UNLESS OTHERWISE SPECIFIED:

0 PLC	± -
1 PLC	± -
2 PLC	± 0.76 [0.30]
3 PLC	± -
4 PLC	± -
ANGLES	± -

MATERIAL: SEE CALLOUTS

FINISH: SEE CALLOUTS

THIS DRAWING IS A CONTROLLED DOCUMENT.

DIN D BROCKWAY 12DEC95

CHK C.DORWART 12DEC95

APVD M.MCALONIS 13DEC95

NAME: CONNECTOR KIT, UNASSEMBLED, RECEPTACLE, 34 POSITION, M SERIES

SIZE: A1

CAGE CODE: 00779

DRAWING NO: 213931

RESTRICTED TO: -

WEIGHT: -

CUSTOMER DRAWING

SCALE: 2:1

SHEET: 1 OF 1

REV: K1